



## Commercial Value Series LED HDTV

32" LED Model J32BE925

40" LED Model J40BE925

55" LED Model J55BE925



Anti-Theft  
Base



IR  
Pass-thru



Volume  
Limiter



USB Clone  
Programming



Commercial  
Interface



Eco-  
Friendly



1-Year  
Replacement

## SPECIFICATIONS

### J32BE925 - 32" LED HDTV

Cabinet Color	brush black
Screen Size	32" diagonal
Display Resolution	1366 x 768
Brightness (typical)	300 cd/m <sup>2</sup>
Viewing Angle	176°x176°
Response Time (typical)	8ms
Broadcast System	NTSC/ATSC/QAM
Max Audio Output	2x8 W
VESA Standard	200 mm x 200 mm
Power Supply	AC 100-240V 60Hz
Power Consumption	<38 W
Standby Consumption	<1 W
TV & Stand (W x H x D)	29.1 x 19.2 x 8.1"
TV w/o Stand (W x H x D)	29.1 x 17.4 x 3.5"
Set Weight	12.4 lbs.
Shipping Weight	16.8 lbs.

### J40BE925 - 40" LED HDTV

Cabinet Color	brush black
Screen Size	39.5" diagonal
Display Resolution	1920 x 1080
Brightness (typical)	300 cd/m <sup>2</sup>
Viewing Angle	176°x176°
Response Time (typical)	8.5ms
Broadcast System	NTSC/ATSC/QAM
Max Audio Output	2x10 W
VESA Standard	200 mm x 200 mm
Power Supply	AC 100-240V 60Hz
Power Consumption	<43 W
Standby Consumption	<1 W
TV & Stand (W x H x D)	36 x 23.3 x 8.8"
TV w/o Stand (W x H x D)	36 x 21.4 x 3.3"
Set Weight	20.1 lbs.
Shipping Weight	24.6 lbs.

### J55BE925 - 55" LED HDTV

Cabinet Color	brush black
Screen Size	54.5" diagonal
Display Resolution	1920 x 1080
Brightness (typical)	300 cd/m <sup>2</sup>
Viewing Angle	178°x178°
Response Time (typical)	8 ms
Broadcast System	NTSC/ATSC/QAM
Max Audio Output	2x10 W
VESA Standard	200 mm x 200 mm
Power Supply	AC 100-240V 60Hz
Power Consumption	<114 W
Standby Consumption	<1 W
TV & Stand (W x H x D)	49.5 x 31.5 x 10.25"
TV w/o Stand (W x H x D)	49.5 x 29.5 x 3.25"
Set Weight	35 lbs.
Shipping Weight	43 lbs.

## COMMERCIAL FEATURES

Ultra-Slim Bezel	New thin bezel with reduced weight.
Channel Labeling	Allows channels to have individual customized names
Initial Channel	Sets the input/channel for the TV to tune when turned on
Volume Limiter/Initial Volume	Sets the minimum, maximum and initial volume settings when the TV is turned on
USB Cloning Capable	Allows duplication of TV configuration for easy installation
USB File Play	Allows guests to play MP3 and view JPG files, as well as charge mobile devices
Auto Power-Off	Allows the TV to turn off after a selectable period of inactivity
Master & Guest Remotes	Separate remotes for configuration and operation
Front Panel/Menu Lockout	Disables front panel and menu controls to make television "tamper-proof"

Power On/Off Scheduler	Sets recurring time for the TV to power on and off
Energy-Saving Features	Auto power-off, less than 1 watt in standby mode, low power LED, no signal power-off
VESA Mount Pattern	Wall-mount your TV using standard mounts
IR Pass-Thru	Allows control of an external device without the need for direct line of sight

## Accessories

User Remote (R230D1)	Included
Master Remote (R230D2)	Not Included (Optional)
Swivel Stand	Included on 32" & 40" models
Direct TV DRE Kit	Not Included (Optional)
Anti-Theft Security Lock Kit	Included

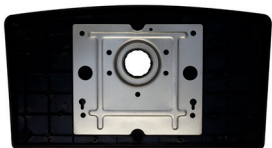
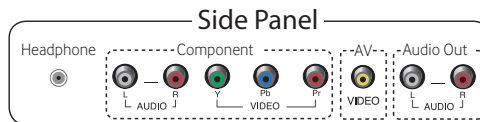
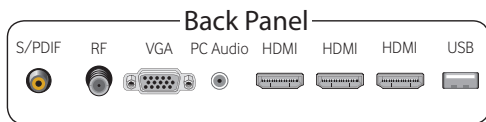
## Certifications

FCC, RoHS, cTUVus, CEC	Yes
------------------------	-----

## Service/Limited Warranty

Limited Warranty	One-Year replacement, provides for minimal downtime by offering advance replacement shipping instead of on-site repair
------------------	--

Note: Features and specifications are subject to change without notice.



Anti-Theft Base

